



**EASY TO INSTALL!**

# LSE NOISE BARRIER WALL SYSTEM



**The Highway and Interstate Absorptive Noise Barrier Wall with Over 30 Years of Proven Performance!**



**T**he Sound Fighter® LSE Noise Barrier Wall System is the perfect solution to virtually any highway or interstate noise application. The noise absorptive panels are easy to install and maintenance free. Since the LSE System has such a high absorptive value, the possibility of reflected noise is eliminated. Sound Fighters has been manufacturing and shipping the LSE Sound Wall System throughout the world for over 30 years.

## **Outstanding Features:**

- Fully Absorptive
- Lightweight
- Modular Design
- Choose Any Color
- Easy to Assemble and Disassemble
- Non-Corrosive
- Non-Conductive
- Water/Moisture Resistant
- Will Not Rust, Rot or Stain
- Fast Delivery



# THE ULTIMATE IN NOISE CONTROL

The LSE Noise Barrier Wall System is a great way to reduce unwanted noise from cars and trucks. The sound absorption panels eliminate virtually all irritable noise caused by highways and interstates. With the Sound Fighter® System you get the most dBA reduction for least money spent.

## Applications:

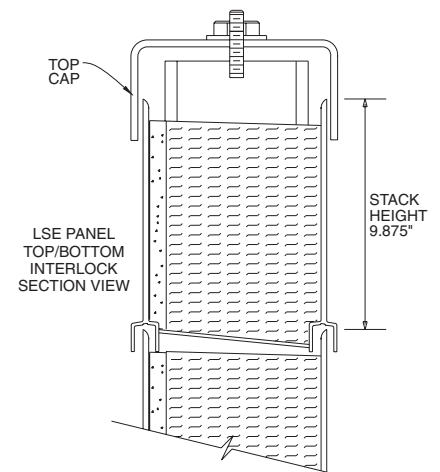
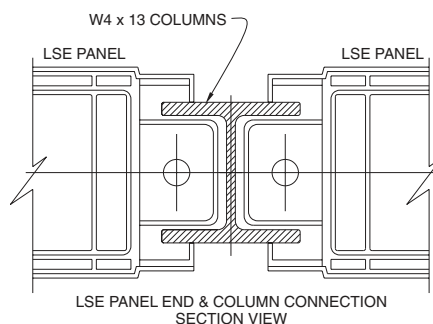
- Highways
- Interstates
- Bridges
- Elevated Roadways
- Highway Approaches
- Neighborhood Sites
- Truck Turn Arouds
- Commercial Sites
- Industrial Sites
- Shopping Centers
- Racetracks
- Residential Developments



The Sound Fighter® LSE Noise Barrier Wall System is designed for easy installation. Because the panels are lightweight and modular, the LSE sound wall can be installed much cheaper than other noise barriers. **Any construction company can easily erect the LSE wall system in just a few days without any special equipment.**

## Dimensions:

	LSE 1000	LSE 2000
Length	38.75"	73.00"
Depth	6.00"	6.00"
Height	10.50"	10.50"
Stack Height	9.875"	9.875"
Area	2.50 Sq.ft	5.00 Sq.ft
Panel Weight	11.75 lbs.	23.25 lbs.
Weight/Sq.ft	5 lbs.	5 lbs.
Col. Center Dist.	39.50"	74.00"



## Certified Laboratory Acoustic Test and Results:

### Noise Absorption Test

#### Test Result

Noise Reduction Coefficient

**1.05**

#### Test Method

ASTM C 423-90a  
ASTM E 795-92

### Sound Transmission Loss Test

#### Test Result

Sound Transmission Loss

**33**

#### Test Method

ASTM E 90-90  
ASTM C 423-90a  
ASTM E 1332-90



6135 Linwood Avenue  
Shreveport, Louisiana 71106

Tel: 318.861.6640

Fax: 318.865.7373

[www.soundfighter.com](http://www.soundfighter.com)